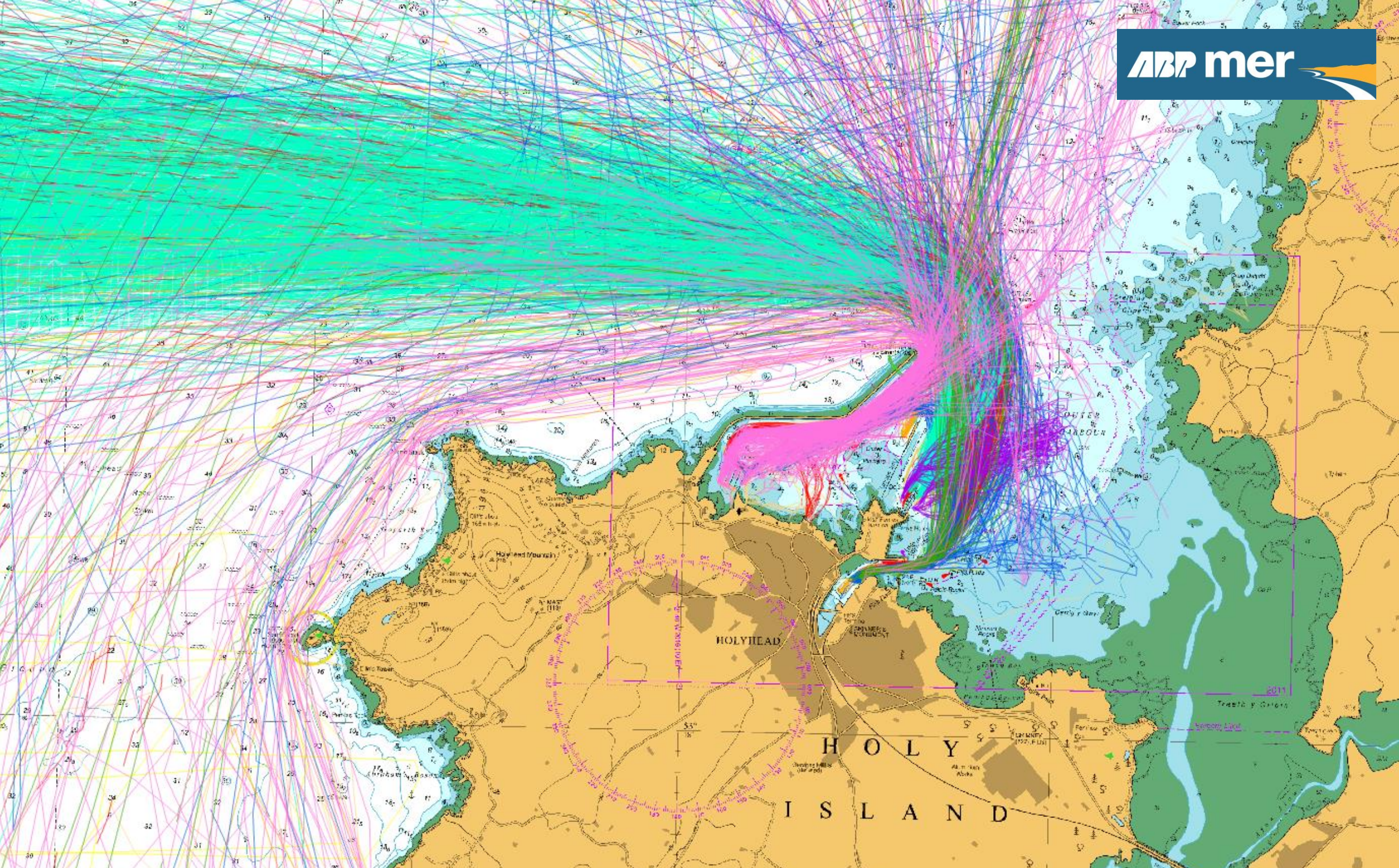


THE VALUE OF AIS

Examining vessels in the Dover Straits



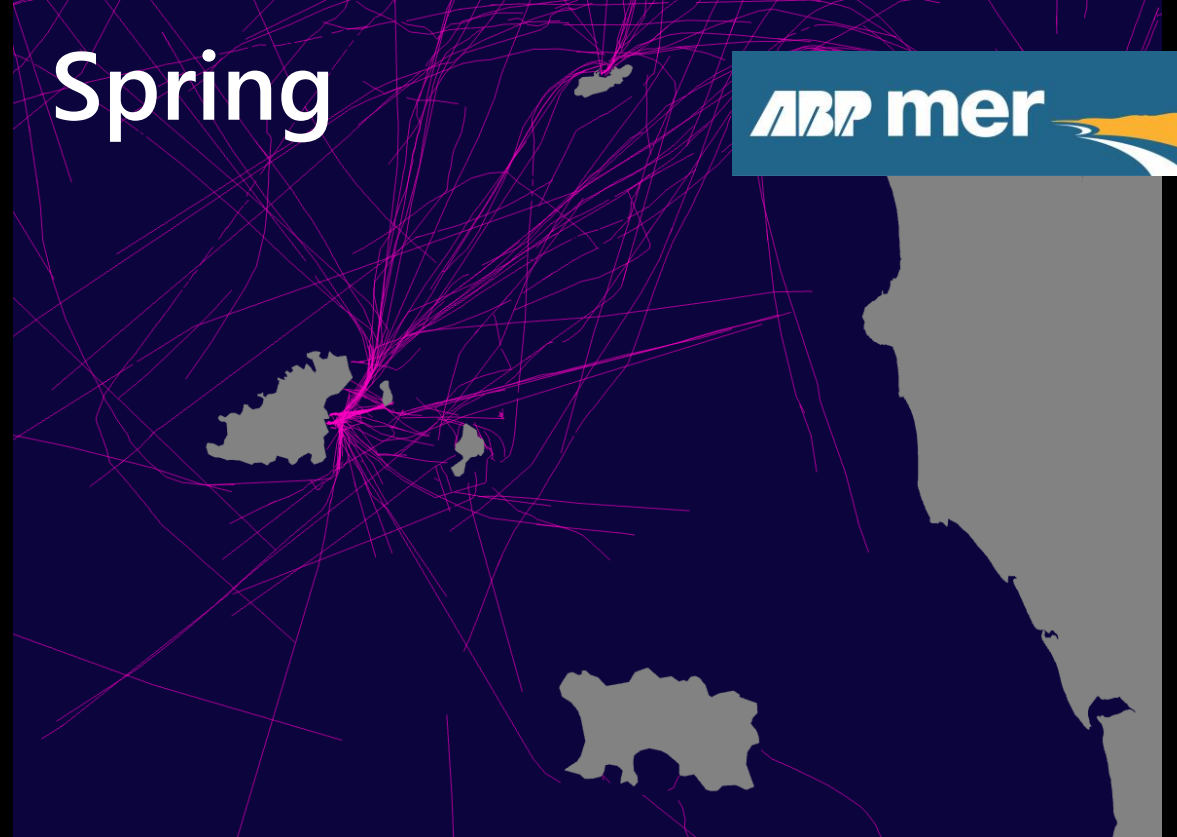
THE VALUE OF AIS

Informing Navigational Risk Assessments at Holyhead

Winter



Spring



Summer



Autumn



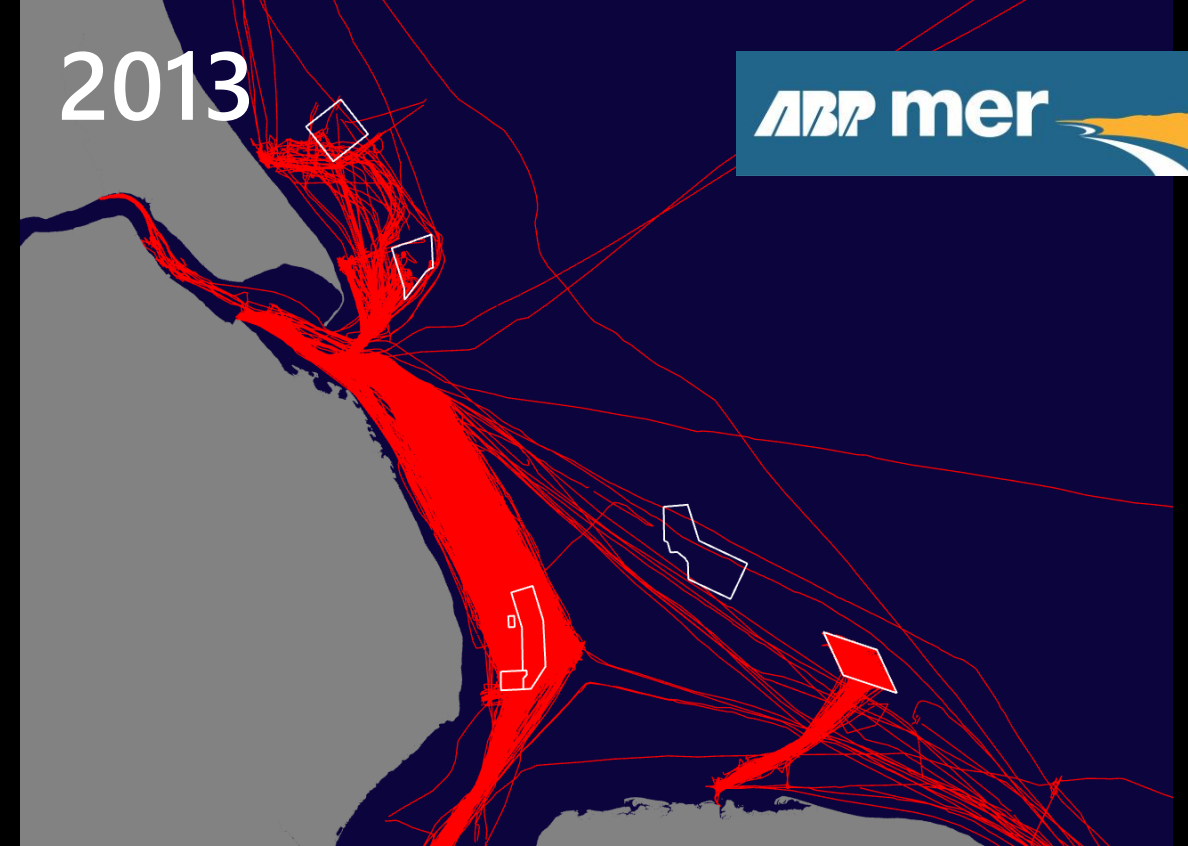
THE VALUE OF AIS

Identifying seasonal trends of recreational vessels

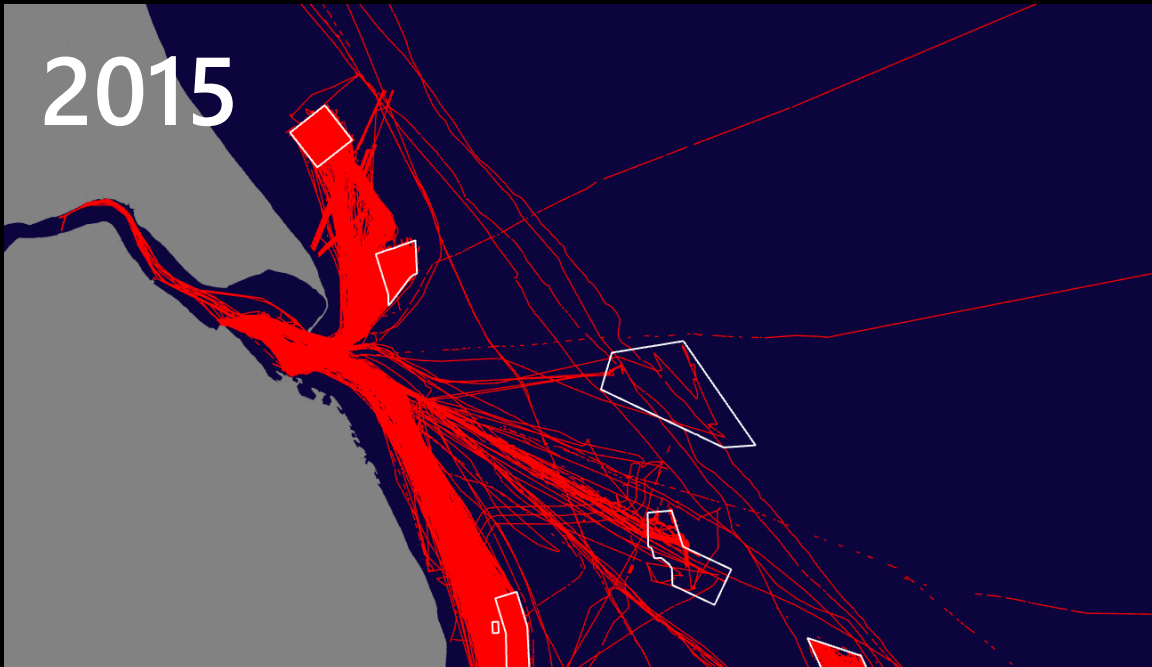
2011



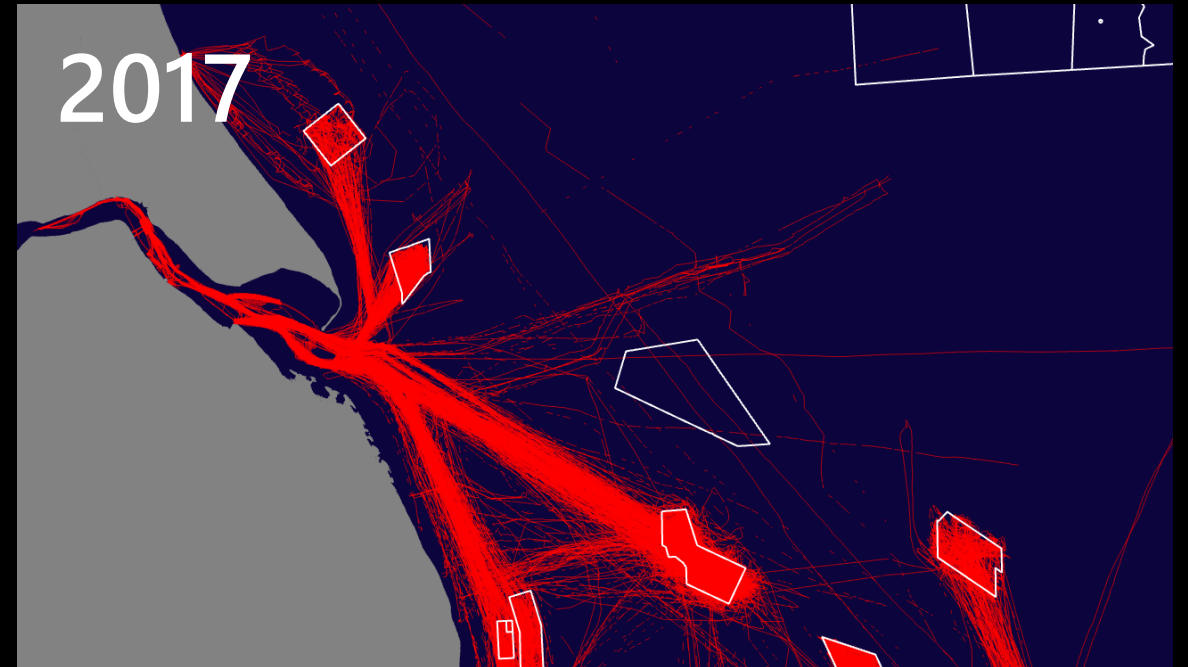
2013



2015



2017



THE VALUE OF AIS

Identifying trends – high speed craft use in connection with offshore wind